

For first page only, start title here, i.e., drop title ½ inch (13 mm) below the top margin

# Sailing Slow Solar Winds: New View from the Far Side of the Universe

*(Title is in 20 point Times Roman font, cap/lower case, single-spaced, bold, and centered)*

Gary M. Larson<sup>a</sup>, Georgios N. Ikaros<sup>b</sup>, John T. Ribald<sup>c</sup>,  
and O. Susanne Hiquu<sup>c</sup>

*(Authors are in 14 point Times Roman font, cap/lower case, centered)*

<sup>a</sup>Laboratory for Astronomy and Solar Physics, NASA Goddard Space Flight Center,  
Greenbelt, MD 20771, USA

<sup>b</sup>Department of Physics, National Technical University, GR-10101 Athens, Greece

<sup>c</sup>Department of Astronomy, Yale University, P.O. Box 208101, New Haven, CT 06520-8101, USA

*(Addresses are in 10 point Times Roman font, cap/lower case, italic, centered; use complete addresses)*

**Abstract.** This is the sample paper for the 6 x 9 inch format. Each paper must include an abstract. All papers in AIP Conference Proceedings are listed by various abstracting services and databases with complete abstracts. Indent two spaces from the left and right margins. Use 10 point Times Roman font size, fully justified. Begin the abstract with the word “Abstract” followed by a period in bold font. Continue with normal 10 point font. Leave two blank lines below the abstract.

**Keywords:** Enter Keywords here.

**PACS:** Replace this text with PACS numbers; choose from this list:

<http://www.aip.org/pacs/index.html>

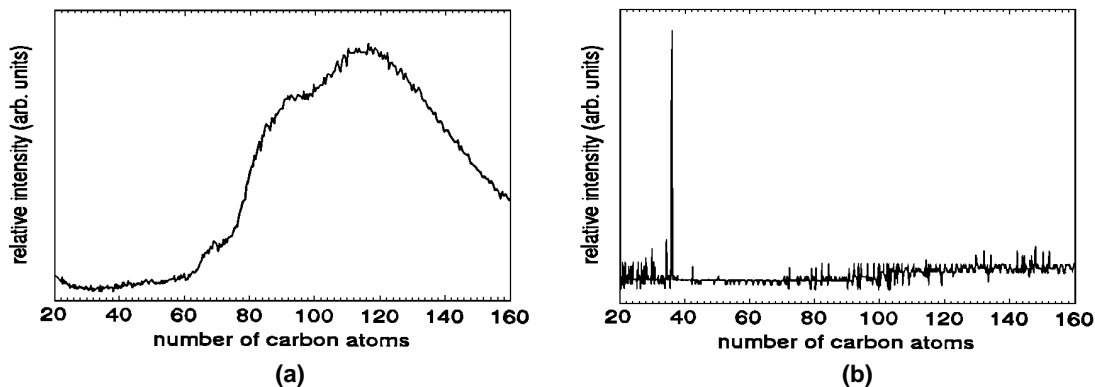
## INTRODUCTION

*(1<sup>st</sup> level heading, 14 point, all caps, bold, centered)*

The trim size of the published book is 6 3/8 x 9 1/4 inches (162 x 235 mm). The text area on the page will be 5 13/16 inches wide by 8 5/8 inches long (148 mm x 219 mm or 35 x 52 picas). It is important to follow the specifications exactly when setting the margins. You may have to compute the margin settings and test them to make sure the text area dimensions are followed exactly. **All pages will be reduced 15% during the printing process**, so the text area noted above as well as the instructions on font sizes to be used must be followed exactly. Embed all fonts when saving your file and make sure that figures and figure labels are large enough to be legible after reduction.

Times Roman font is used throughout the paper with single line spacing and the text is fully justified. Paragraph style: indent first line three spaces (0.19 inches), no extra line spacing between paragraphs. **Use 12 point font for text.** Avoid large blank areas within the text area and do not type outside the text area. **Do not include any headers or footers in your document.**

Microsoft Word templates and LaTeX style guides for the 6 x 9 inch format are available on the AIP website at <http://www.aip.org/proceedings/6x9.jsp> in the panel for authors.



**FIGURE 1.** Use 10 point font size for figure captions. Figures must be inserted in the text and may not follow the Reference section. If you reproduce figures from other sources, state clearly that the figure is reprinted. For example, reprinted from [2]. If a reference is given for additional information only, please indicate this as well. Figure captions should be centered under the figure.

## **OTHER SPECIFICATIONS**

*(1<sup>st</sup> level heading, 14 point, all caps, bold, centered)*

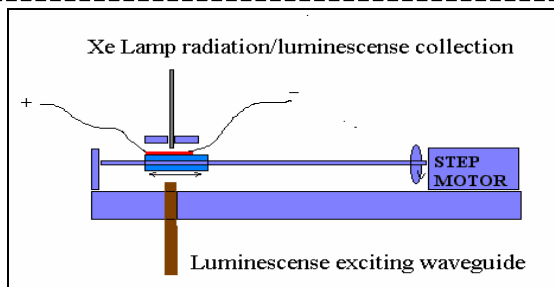
Figures, tables, and equations must be inserted in the text and may not be grouped at the end of the paper. Important: miscounting of figures, tables, or equations may result from revisions. Please double check the numbering of these elements before you submit your paper to the volume editor. Contact your volume editor or conference chairperson regarding content, length, and scheduling of your manuscript. If you have questions regarding page layout, color artwork, permissions, or copyright, you may contact the AIP Conference Proceedings Editorial Office in Melville, New York, USA, via email at [proceedings-mgr@aip.org](mailto:proceedings-mgr@aip.org).

## **Figures**

*(2<sup>nd</sup> level heading, 14 point, cap/lower case, bold, centered)*

Cite all figures in the text consecutively. The word “Figure” should be spelled out if it is the first word of the sentence and abbreviated as “Fig.” elsewhere in the text. *Place the figures as close as possible to their first mention in the text at the top or bottom of the page with the figure caption positioned below, all centered.* Figures must be inserted in the text and may not follow the Reference section. Set figure captions in 10 point size, Times Roman font. Type the word “FIGURE 1.” in bold all caps, followed by a period. Each figure must include a caption.

Provide black-and-white figures if they should be printed in black-and-white. Figure 1 is an example of a black-and-white line drawing.



**FIGURE 2.** If you have *color in your figures*, AIP can convert them to black/white for no extra cost. In that case, check your figures carefully for possible loss of information. Avoid reference to color in the figure caption. If your figures are to be printed in color, it will be cost effective to group color figures on a single page as much as possible.

### *Color Figures*

*(3<sup>rd</sup> level heading, 14 point, cap/lower case, italic, centered)*

Some color figures can be printed in black-and-white, but generally only with some loss of information. Check your figure legends carefully and remove any mentioning of color if the figure is to be printed in black-and-white. All color figures will be printed in black-and-white unless you make arrangements with your volume editor or AIP for color printing. If you accept the color page charge, AIP will need a letter or email from you, including complete contact information, accepting the additional charges. If required by your institute, AIP will need a purchase order number as well.

### **Tables**

*(2<sup>nd</sup> level heading, 14 point, cap/lower case, bold, centered)*

Number tables in the text with Arabic numerals. Give each table a concise title and define any abbreviations in footnotes to the table. Place tables at the top or bottom of the page, close to where they are first cited. Center the table in the width of the text area. Fonts for the entire table are Times Roman, 10 point size, including title and footnotes. Type the word “TABLE 1.” in bold, all caps, followed by a period. The table title should be in normal font, caps, and lower case. Margins used for this sample paper are indicated in Table 1. Use top and bottom rules only, and a rule to separate the column heads.

**TABLE 1.** Margins used for this sample paper (printed on MS Word U.S. letter size paper).

	<b>Margins</b>
<b>Left</b>	1.35"
<b>Right</b>	1.35"
<b>Top</b>	1.04"
<b>Bottom</b>	1.00"

## **Equations**

*(2<sup>nd</sup> level heading, 14 point, cap/lower case, bold, centered)*

Make your equations clear and legible, centered, with a space above and below. Equations should be the same point size as the text, i.e., 12 point font. Place each equation on a separate line and number all equations sequentially. Enclose the equation number in parentheses and place it flush with the right-hand margin. Equation (1) is an example of a one-line equation. Please double-check your equation numbering before submitting your paper to the volume editor. Please make sure to embed all fonts when saving your file so that special characters do not get lost.

$$\frac{d[F_1]}{d\omega_2} = SAm_2 \cos \omega, \quad \frac{d[F_1]}{d\omega_3} = SAm_3 \cos \omega. \quad (1)$$

## **Footnotes**

*(2<sup>nd</sup> level heading, 14 point, cap/lower case, bold, centered)*

Footnotes should be placed at the bottom of the page where they are cited by superscript numbers. Place a ½ point rule 2 inches (50 mm) long above the footnote. Set the footnote in 8 point Times Roman font.

## **ACKNOWLEDGMENTS**

*(1<sup>st</sup> level heading, 14 point, all caps, bold, centered)*

Acknowledgments should be positioned at the end of the paper before the reference section. The text of the acknowledgments is in 12 point font.

## **REFERENCES**

*(1<sup>st</sup> level heading, 14 point, all caps, bold, centered)*

When referring to citations in the text, in square brackets [ ] show the number in order of appearance. In the reference section, the references themselves are in 10 point size font, single line spacing. List all references in numerical order.

Note: figures and tables must be inserted in the text and may not follow the Reference section.

1. M. P. Brown and K. Austin, *The New Physique*, Publisher, London, 2002, pp. 25-30.
2. M. P. Brown and K. Austin, *Appl. Phys. Letters* **80**, 2503-2504 (2002).
3. R. T. Wang, "Title of Chapter," in *Classic Physiques*, edited by R. B. Hamil, Publisher, New York, 2004, pp. 212-213.
4. C. D. Smith and E. F. Jones, "Load-Cycling in Cubic Press" in *Shock Compression of Condensed Matter-2003*, edited by M. D. Furnish et al., AIP Conference Proceedings 706, Melville, New York, 2004, pp. 651-654.
5. W. J. Thompson and D. J. Albert, U.S. Patent No. 7,430,020 (5 March 2000).
6. Burka, L. P., "A Hypertext History of Multi-User Dimensions," (1993), <http://www.utopia.com/talent/lpb/muddex/essey.html>, accessed February 3, 2003.